

Short commissioning Alfen Charge Point

This brief installation instruction provides a quick overview of all the necessary steps. Detailed information on the individual steps, references, and sources can be found in our [HelpCenter](#). The Installation instructions are only valid for the integration of the energy management system and the configuration of relevant assets.

Required:

- Alfen license Active load balancing
- Installer login data
- ACE Service Installer app (3.4.5-119 or higher)
- Latest firmware (version 4.5 or higher)



Connection

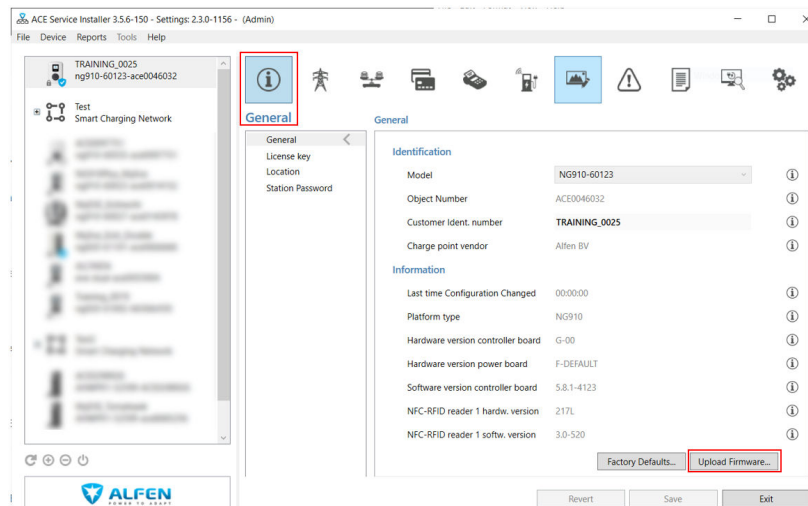
The connection is made via an Ethernet cable to the router/switch at the RJ45 port (12)



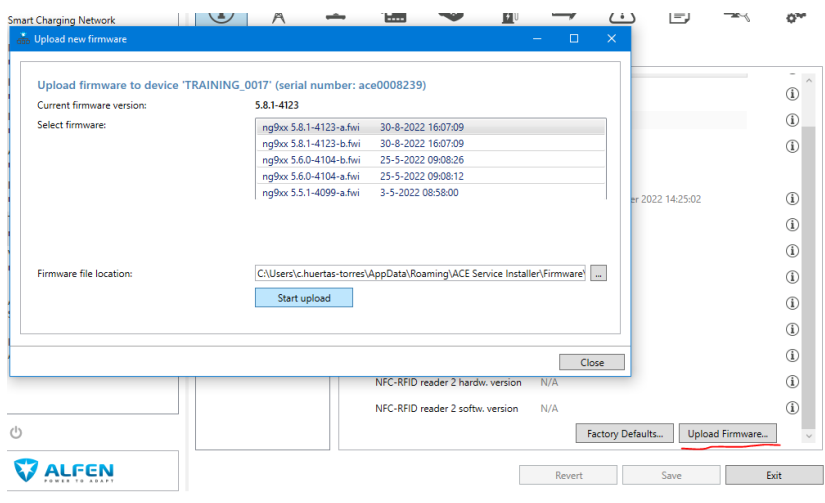
The port for the Service Installer/UTP cable (7) and the P1 port connection (11) are not required for gridX.

Firmware update

1. Log in to the ACE Service Installer with your installer logins.
2. Go to *General/General* and click on *Upload Firmware/Firmware*.



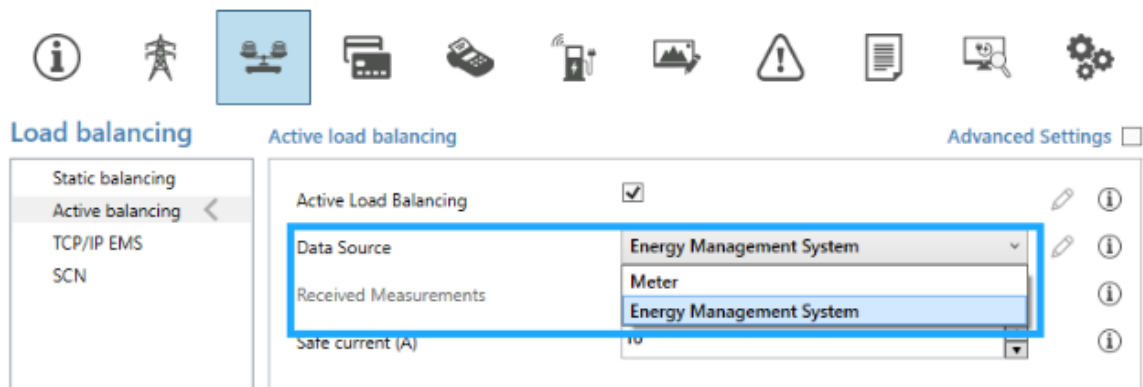
3. Select the desired (latest) version and click on *Start upload*.



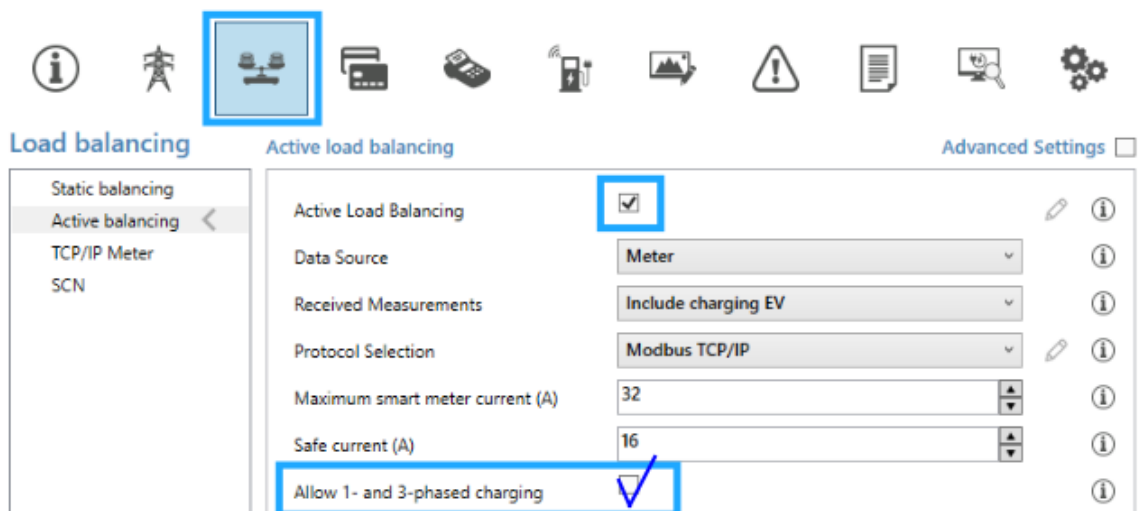
4. As soon as the update is complete, the charging station restarts automatically.

Configuration

1. Log in to the ACE Service Installer with your installer logins.
2. Switch on *Active Load Balancing*.

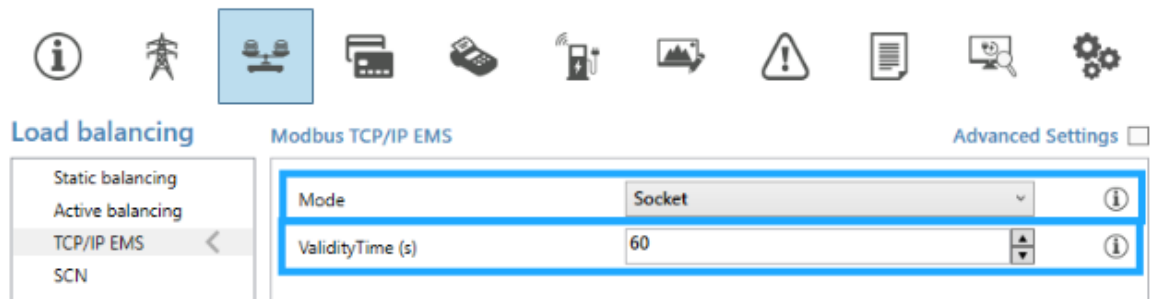


3. Select the *Energy Management System* option as the *Data Source*.
4. Activate the checkbox *Allow 1- and 3-phased charging* (if available).



Note: the checkbox for 'Allow 1- and 3-phased charging'. This option must be active to allow an Energy Management System to control switching between single-phase and three-phases while charging. In the current implementation this option must be checked locally using the Service Installer Application.

5. Set the *Safe Current* field to a sensible value. Take the maximum connected load into account.
6. Set the *Modbus TCP/IP EMS Mode* field to the value *Socket*.
7. Set the *Validity time(s)* to 60.



8. Restart the charging station.